

# Water Action Volunteers Stream Monitoring Data Sheet — Large Text Version

<b>Station Info</b>	WAV Station Number*: _____ Date*: ____/____/____ Time*: _____
	WAV Station Name*: _____
	Team Member Name(s)*: _____

<b>Weather</b>	Weather: Sunny      Partly Sunny      Cloudy      Rain      Snow      Thunderstorms (choose one)
	Weather over past two days: _____ Sampling Date: Primary Safety Other (choose one)
	Current Stream Condition: Normal      Flooding      Dry      Stagnant      Frozen      Other: _____ (choose one)
	Observations: _____

<b>WAV Monitoring Parameters</b>	Parameters Tested	Your Results					Units	
	Air Temperature						°C	
	Water Temperature						°C	
	Dissolved Oxygen (D.O.) Sampling Method	Choose One:	Hatch Kit	LaMotte Kit	YSI 550A Meter	Other: _____		
	D.O. m/L	No. of Titration Drops:	No. of Plastic Measuring Tubes:		Dissolved Oxygen Content:		mg/L	
	D.O. % Saturation						%	
	pH						-	
	Transparency	Tube Length (select one)			Trial #1	Trial #2	Average	-
		60 cm	100 cm	120 cm				cm
	Specific Conductance	ECTestr reading: _____ (choose units displayed)      ms/cm      μS/cm						
	Chloride Sample	Collected? Yes      No      Point/Outfall Number: _____						
	Total Phosphorus Sample	Collected? Yes      No      Point/Outfall Number: _____						

<b>WAV Monitoring Parameters</b>	Was streamflow monitored this sampling event? Yes      No							Length Assessed _____ ft		
	If No, why not? _____							Stream Width*: _____ ft		
	<b>Stream Depth Measurements</b>									
	Point	Depth (10 <sup>th</sup> Feet)	Point	Depth (10 <sup>th</sup> Feet)	Depth Conversion Chart				*if stream ≤ 20 ft. wide, measure depth every foot across the width. If stream is > 20 ft. wide, measure depth at 20 equal intervals across the entire width.	
					Ft/in	10 <sup>th</sup> Ft	Ft/in	10 <sup>th</sup> Ft		
	1	0	11		3/8-7/8	0.05	6 3/8-6 7/8	0.55	<b>Velocity Correction Factor</b>	
	2		12		1-1 1/2	0.1	7-7 3/8	0.6	<b>Trial Number</b>	<b>Time (Seconds)</b>
	3		13		1 5/8-2	0.15	7 1/2-8	0.65	1	
	4		14		2 1/8-2 5/8	0.2	8 1/8-8 5/8	0.7	2	
	5		15		2 3/4-3 1/4	0.25	8 3/4-9 1/4	0.75	3	
6		16		3 3/8-3 7/8	0.3	9 3/8-9 7/8	0.8	4		
7		17		4-4 3/8	0.35	10-10 3/8	0.85	<b>Velocity Float Trials</b>		
8		18		4 1/2-5	0.4	10 1/2-11	0.9	Choose the bottom type:		
9		19		5 1/8-5 5/8	0.45	11 1/8-11 5/8	0.95	Rough	0.8	
10		20		5 3/4-6 1/4	0.5	11 3/4-12	1.0	Smooth	0.9	

<b>Monitoring Equipment Calibration</b>	D.O. Meter: Yes      No
	pH Meter: Yes      No
	ECTestr: Yes      No

Expected Ranges for Parameters	
H2O Temperature:	12-30 °C
Dissolved Oxygen:	3-7 mg/L
D.O % Saturation:	90-110%
pH:	6.0-9.0
Transparency Tube:	≤120 cm

<b>Equipment Cleaning and Distribution</b>	Boots/Waders/Footwear and other monitoring materials cleaned and disinfected? Yes      No
--	---

Thermistor			
Serial #: _____	Type: HOBO (long grey)	TIDBIT (yellow)	TIDBIT V2 (orange)
Activity Performed (choose one):	Deployment	Retrieval	Monthly Check
Deployment/Retrieval Time: _____	Monthly Check - thermistor submersed		Yes      No
Describe location of thermistor if you <u>developed it today</u> , or action(s) taken if <u>thermistor was not submersed</u> :			

**Biotic Index (monitored in May and late September/early October)**

**\*\*You may use the Key to Macroinvertebrate Life in the River to help you identify macroinvertebrates.**  
**Group 1: These are sensitive to pollutants. Select each animal found.**



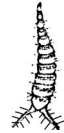
Stonefly Larva



Dobsonfly Larva



Alderfly Larva



Water Snipe Fly Larva

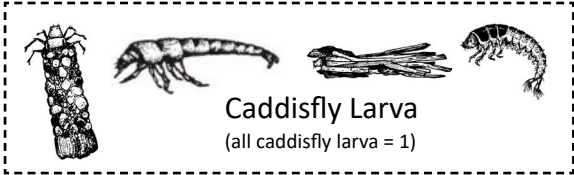
**Relative Size Key**

= larger than picture

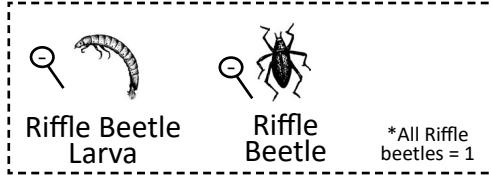
= smaller than picture

No. of group 1 animals circled:

**Group 2: These are semi-sensitive to pollutants. Select each animal found.**



Caddisfly Larva  
(all caddisfly larva = 1)



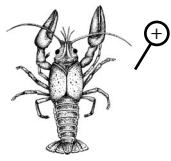
Riffle Beetle Larva

Riffle Beetle

\*All Riffle beetles = 1



Freshwater Mussel or Fingernail Clam



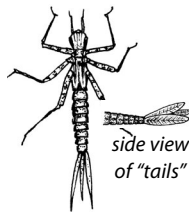
Crawfish



Dragonfly Larva



Mayfly Larva



Damsely Larva



Crane Fly Larva



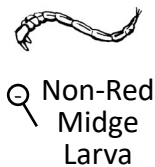
Water Penny

No. of group 2 animals circled:

**Group 3: These are semi-tolerant of pollutants. Select each animal found.**



Black Fly Larva



Non-Red Midge Larva



Snails: Orb or Gilled (right side opening)

\*All Snails = 1



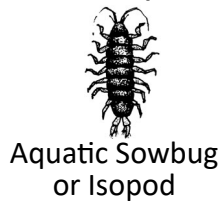
Amphipod or Scud

No. of group 3 animals circled:

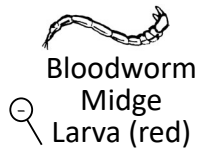
**Group 4: These are tolerant of pollutants. Select each animal found.**



Pouch Snail



Aquatic Sowbug or Isopod



Bloodworm Midge Larva (red)



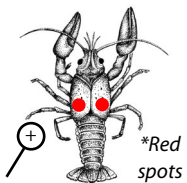
Leech



Tubifex Worm

No. of group 4 animals circled:

**Key Aquatic Invasive Species (AIS)**



Rusty Crayfish



Asian Clam



New Zealand Mudsnail



Faucet Snail

**If any AIS are found, collect voucher or photo and report to DNR or WAV Coordinator**

Date data entered into SWIMS? \_\_\_\_/\_\_\_\_/\_\_\_\_

Data Entry Volunteer Initials: \_\_\_\_\_