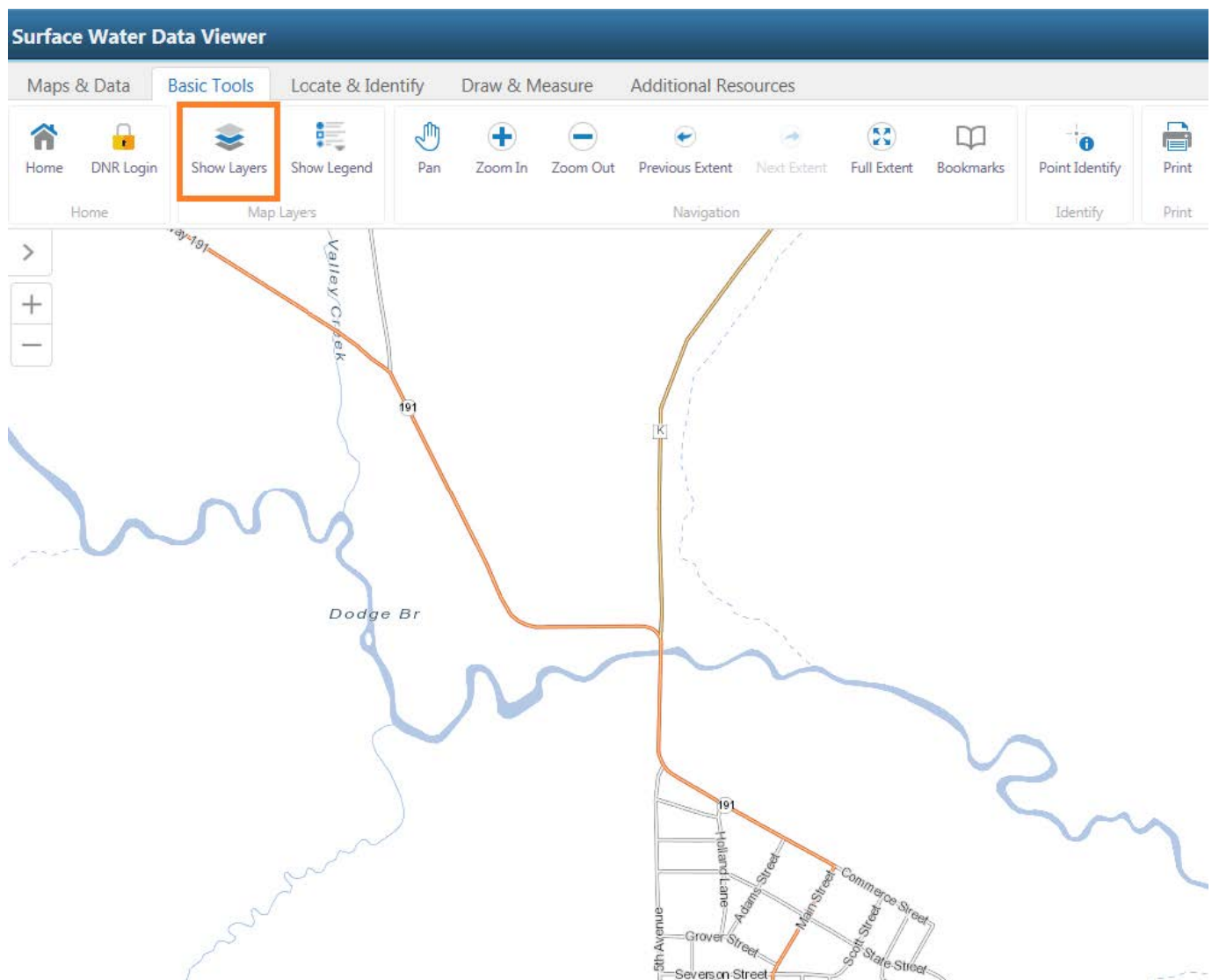


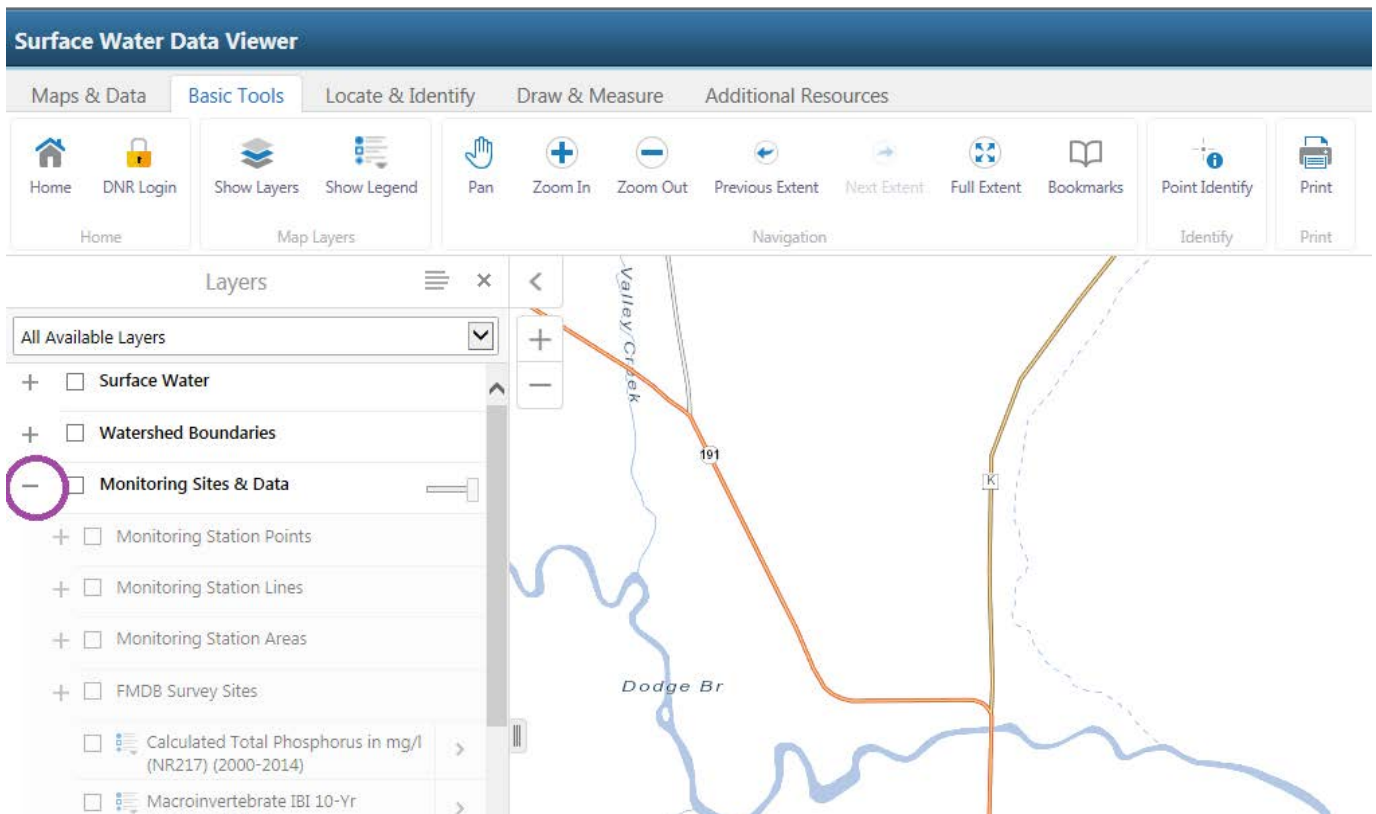
Determining Station IDs Using WDNR's Surface Water Data Viewer

When completing data recording forms for the Water Action Volunteers Stream Monitoring Program, you must include a Station ID. To determine this for your stream monitoring sites, follow these steps:

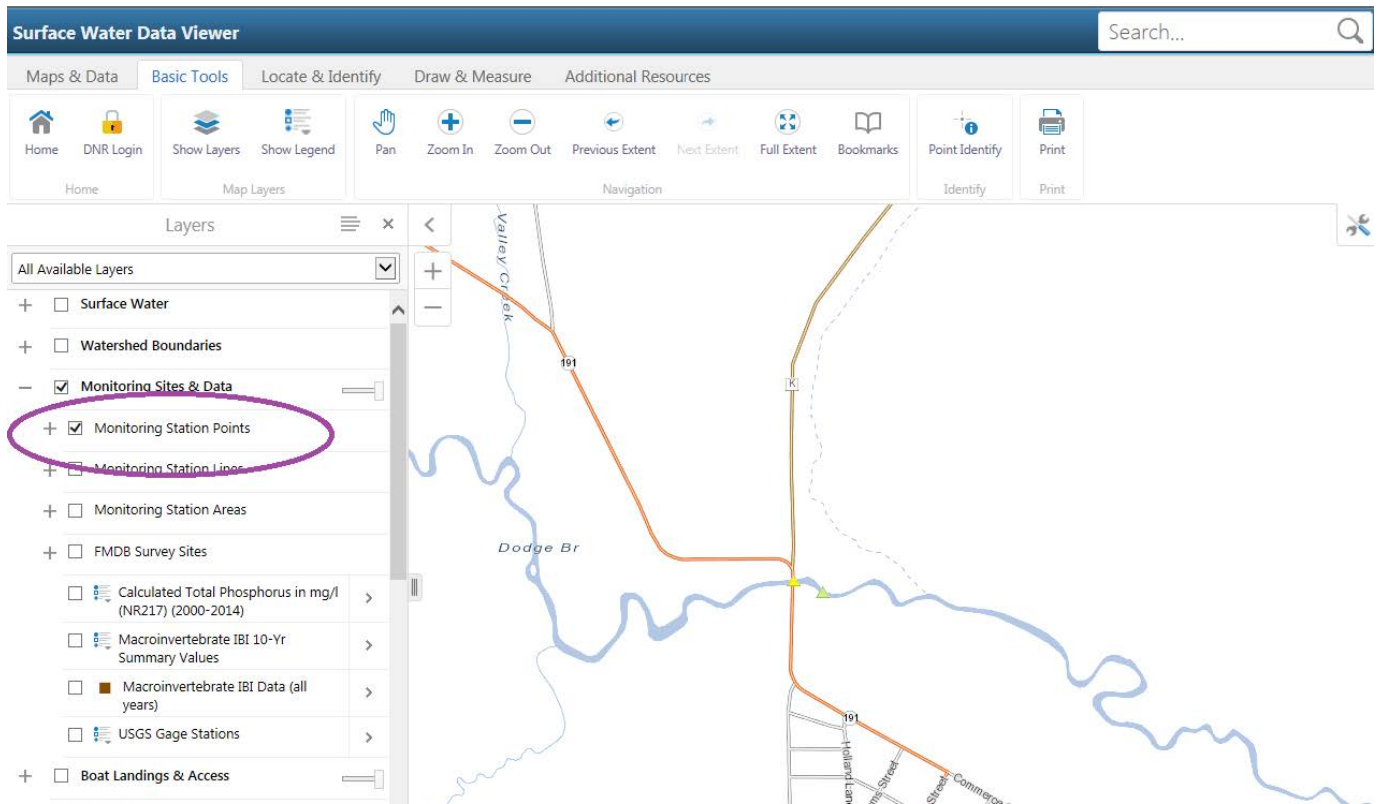
1. Go to the Surface Water Data Viewer at: <https://dnrmaps.wi.gov/H5/?Viewer=SWDV>
2. Click and drag your mouse to draw a rectangle around the area that you want to zoom into.
3. Repeat step 2 until you get sufficiently zoomed in on your stream location to pinpoint your monitoring spot.



5. Click on the + to the left of Monitoring Sites & Data.

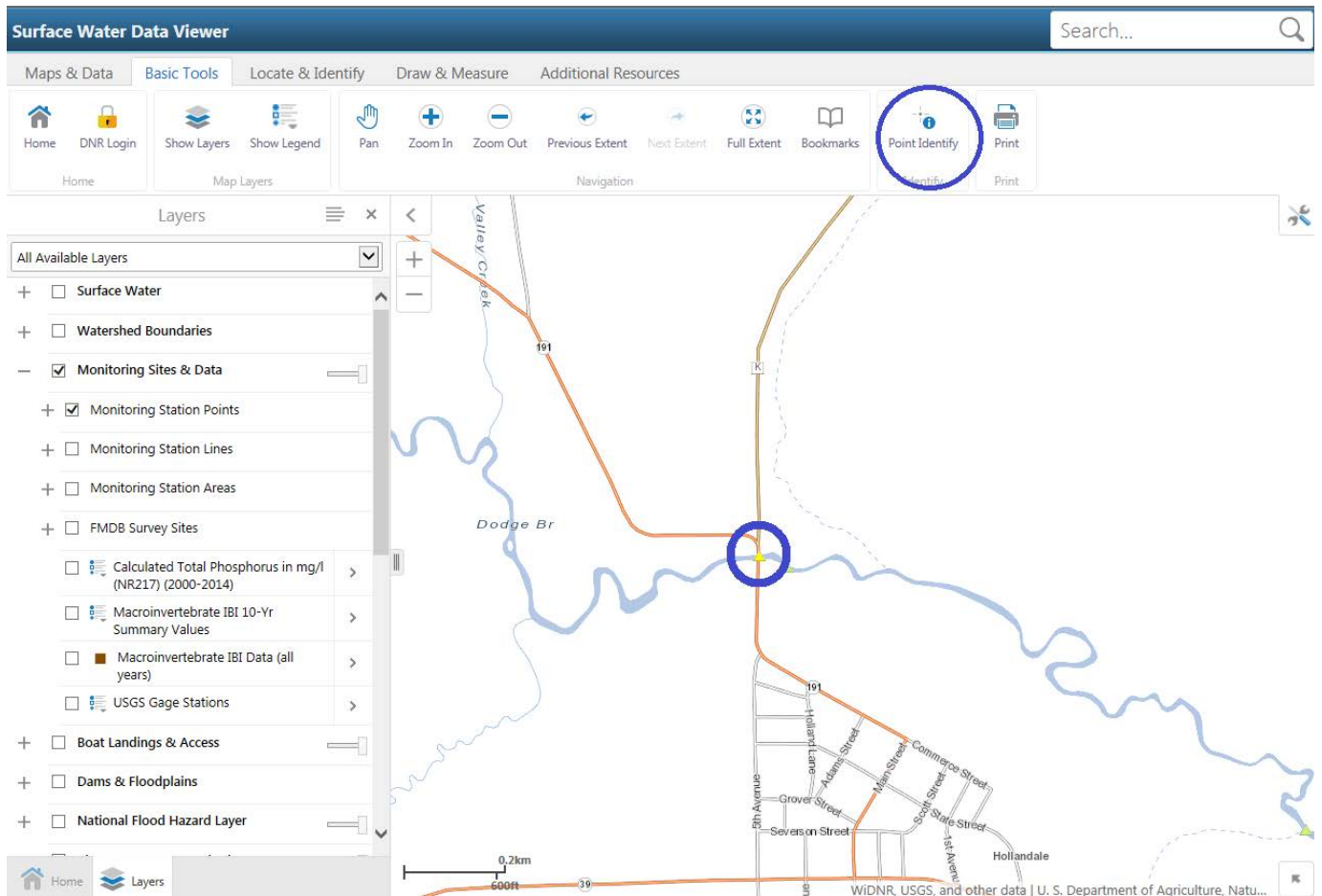


6. Check the box to the left of Monitoring Station Points.



7. Small triangles will appear on the screen.

8. Select Point Identify and then click on the location of your monitoring site.



9. A list of locational information should appear on the left, including your monitoring site's Station ID. The ID is always entirely numeric. In this example it is 253099.

The screenshot displays the 'Surface Water Data Viewer' interface. At the top, there is a blue header with the title 'Surface Water Data Viewer'. Below the header are four tabs: 'Maps & Data', 'Basic Tools', 'Locate & Identify', and 'Draw'. Under the 'Basic Tools' tab, there are several icons and labels: 'Home' (house icon), 'DNR Login' (lock icon), 'Show Layers' (stack of layers icon), 'Show Legend' (list icon), and 'Pan' (hand icon). Below these are two sub-sections: 'Home' and 'Map Layers'. The main content area is titled 'Identify Results (3)' and contains three entries. The first entry is 'Dodge Br (WBIC 910800)' with the description 'River or Stream' and links for 'Metadata' and 'About the Water'. The second entry is 'Dodge Br (WBIC 910800)' with the description 'Lake or Open water' and links for 'About the Water', 'Lake Page', and 'Metadata'. The third entry is 'Dodge Branch - Cth K (Station 253099)' with the description 'Monitoring Station' and links for 'Metadata' and 'Link to Monitoring Data'. This third entry is circled in purple. On the right side of the interface, there are navigation controls including a back arrow, a search icon, and a zoom slider.

Note that you can link to view available monitoring data from the options at the left too.